

news..



The Games Unplugged

Following the success of the 2010/11 Creative Partnerships schools programme 'The Biggest Learning Opportunity on Earth' we have been continuing to work in partnership with A New Direction, Nimble Fish and Graeae Theatre Company. Fundamental's Village of Champions project gave pupils the chance to decide how best to run the Olympic neighbourhoods after the 2012 Games. Taking place in school, there were two parts to each session; a workshop for Key Stage 2&3 students, followed by a teacher INSET to equip staff to run similar creative sessions for pupils themselves. For more information visit <http://www.anewdirection.org.uk/content/489/The-Games-Unplugged--Free-INSET>

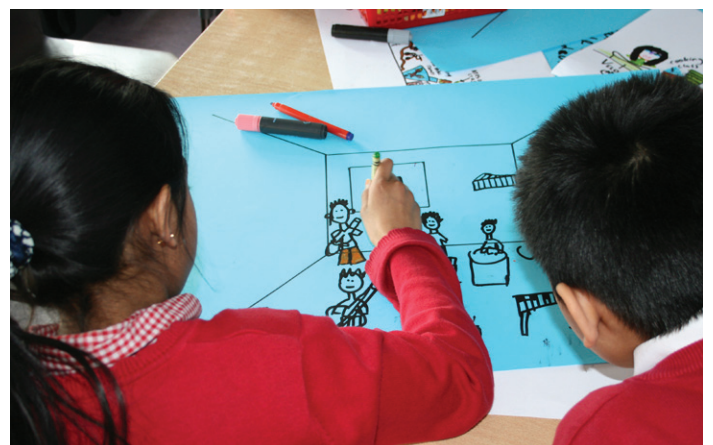


Living Legacy

Fundamental is currently working with four primary schools as part of a programme of engagement for Erect Architecture's winning design to create a community hub building integrated into the parkland and river valley of the north area of the Queen Elizabeth Olympic Park.

Through a creative 2 day workshop, visit, assembly and exhibition in each school, children will develop concept design proposals inspired by the recent **North Hub design competition** to create London's newest public space.

The project utilises Fundamental's successful model of setting a realistic 'live' design brief for school pupils to respond to in order to learn new design skills; whilst at the same time providing them with an enhanced understanding of Olympic Legacy through exposure to information and guidance about the rapid transformation of the built environment.





Legacy Youth Panel

In December the Legacy Youth Panel hosted another successful recruitment event Park Life at the Rich Mix Centre with a unique piece of promenade theatre which reflected the work of the Panel over the last three years. Following an Induction and Park Tour the new cohort are now ready to get to work on influencing the development of the Queen Elizabeth Olympic Park and surrounding areas after the Games.

In November the Panel also responded to the shortlisted competition entries for the North and South Hub design competitions and two longstanding members joined experts on the Technical Board.

2012 looks like being an exciting year for this unique group of young people. Fundamental is delighted to announce that we have been awarded a two year contract to continue to run the Legacy Youth Panel on behalf of the Olympic Park Legacy Company.

To keep up to date with the Legacy Youth Panel you can download the latest newsletter and read their blog here:

www.legacycompany.co.uk/community/get-involved/youth-panel/



Startingpointtours.tumblr.com

Book one of our fact finding tours of the Olympic Park area!

Towards Carbon Free Communities

Fundamental was commissioned by the Architecture Centre Network to develop a resource for secondary schools to support the teaching of STEAM (Science, Technology, Engineering, Art and Design, and Maths) subjects. Towards Carbon Free Communities explores sustainable design and communities from a social, moral, economic and environmental perspective, but also offers the opportunity for students to explore imaginative design. You can download the resource [here](#).

Staff Changes

We are delighted to welcome Naomi Shinkins to the team at Fundamental as our new Participation Manager. Naomi will be the first point of contact for the Legacy Youth Panel programme whilst Davina is on Maternity Leave

About Fundamental

Fundamental Architectural Inclusion is an architecture centre that seeks new ways for communities to participate in the transformation of their neighbourhoods. Based in East London Fundamental is one of 20+ centres nationwide which enable greater public involvement in and understanding of architecture, the built environment and public space.

STRATFORD
RISING

ARCHITECTURE
CENTRE
NETWORK

Fundamental

Architectural Inclusion

For more information contact: Jane Leighton
t: 020 7536 2797 e: jane@fundamental.uk.net
visit: www.fundamental.uk.net
twitter: @FundamentalAI